

Donald Evans

Philatelic Counter

April 30 to June 4, 2022

1



DONALD EVANS

Fauna and Flora, 1945. Wildflowers (Yellow Poppy: Eschscholzia mexicana).

Watercolor and rubber stamp on souvenir postcard, 1973.

(Inv. No. 9664)

2



DONALD EVANS

Yteke, 1933. Fiftieth anniversary of the North Cape settlement.

Watercolor and rubber stamp on paper, 1975.

(Inv. No. 9659)

3



DONALD EVANS

Gnostis. 1957. Natural phenomena.

watercolor on paper, 1972-73.

(Inv. No. 003937)

4



DONALD EVANS

Amis and Amants, 1957. Native portraits and island landscapes.

Watercolor and rubber stamp on souvenir postcard, 1976. 1977.

(Inv. No. 9666)

5



DONALD EVANS

Adjudani. Veiled Adjudani woman.
Watercolor on paper, from an unfinished series, 1977.
(Inv. No. 9674)

6



DONALD EVANS

Adjudani, 1962. Veiled Adjudani woman.
Watercolor on postcard, 1972.
(Inv. No. 9652)

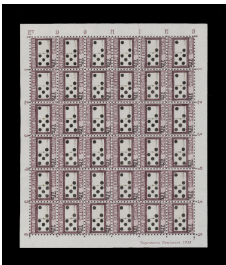
7



DONALD EVANS

Adjudani. Veiled Adjudani woman.
Watercolor on paper, from an unfinished series, 1977.
(Inv. No. 9673)

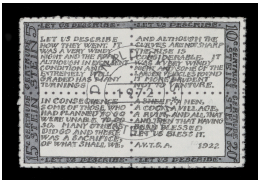
8



DONALD EVANS

Domino, 1938. Dominoes.
Watercolor on paper, 1975.
(Inv. No. 9655)

9



DONALD EVANS

Stein, 1972. Fiftieth anniversary of "A Valentine to Sherwood Anderson" by Gertrude Stein.
Watercolor and rubber stamp on paper, 1972.
(Inv. No. 9661)

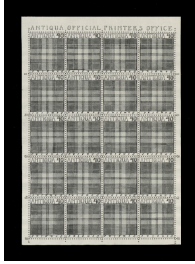
10



DONALD EVANS

Stein, 1972. Gertrude Stein. "Tender Buttons" by Gertrude Stein.
Watercolor and rubber stamp on paper, 1972.
(Inv. No. 9654)

11



DONALD EVANS

Antiqua, 1954. Tartans (Gray Douglas).

Watercolor on paper, 1973.

(Inv. No. 9662)

12



DONALD EVANS

Adjudani, 1961. Carpets.

Watercolor and rubber stamp on cover, 1975.

(Inv. No. 9653)

13



DONALD EVANS

Nadorp, 1965. Mushrooms.

Watercolor and rubber stamp on paper, 1972.

(Inv. No. 9651)

14



DONALD EVANS

Nadorp, 1953. Windmills.

Watercolor and rubberstamp on paper, 1977.

(Inv. No. 9660)

15



DONALD EVANS

Sabot, 1966. Edible mushrooms.

Watercolor and rubber stamp on paper, 1973.

(Inv. No. 9657)

16



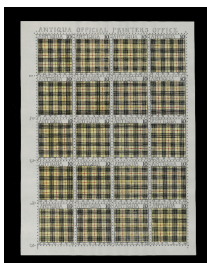
DONALD EVANS

Selamat Makan, 1963. Mangoes.

Watercolor, rubber stamp and collage on cover, 1977.

(Inv. No. 9668)

17



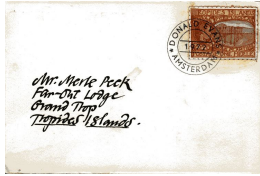
DONALD EVANS

Antiqua, 1954. Tartans (MacLeod).

Watercolor on paper, 1974.

(Inv. No. 9663)

18



DONALD EVANS

Tropides Islands, 1936. Pictorial. Crepuscular pole planting.

watercolor and rubber stamp on cover, 1971-71.

(Inv. No. 004639)

19



DONALD EVANS

Tropides Islands, 1942. Fruits of the Tropides Islands.

Watercolor on paper, 1975.

(Inv. No. 9656)

20



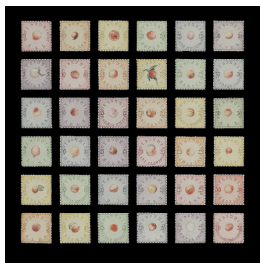
DONALD EVANS

Sabot, 1918. Seapost.

watercolor on paper, 1975.

(Inv. No. 004784)

21



DONALD EVANS

My Bonnie, 1962-67. Peaches.

Watercolor on paper, 1976.

(Inv. No. 9647)

22



DONALD EVANS

1965. Airpost. Map of the Tropides Islands. Inscribed with inter-island route of the Tropides Air Service, 1977

watercolor on paper

(Inv. No. 8996)

23



DONALD EVANS

Tropides Islands, 1973. Death of Bob the cat mascot of the Tropides Islands.

watercolor and rubber stamp on cover, 1973.

(Inv. No. 004641)

24



DONALD EVANS

Sung Ting, 1880. 1884. 1893. Ting-Yao. Arms of Sun-Ting.

Watercolor and rubber stamp on paper, 1976.
(Inv. No. 9658)

25



DONALD EVANS

Amis et Amants, 1956. Native portraits and island landscapes.

watercolor and rubber stamp on paper, 1976.
(Inv. No. 003934)

26



DONALD EVANS

Nadorp, 1940. View of Adelshoeve.

Watercolor and rubber stamp on souvenir postcard, 1977.
(Inv. No. 9665)

27



DONALD EVANS

Yteke, 1963. Landscapes.

Watercolor on cover, unfinished, 1977.
(Inv. No. 9649)

28



DONALD EVANS

Tropides Islands, 1952-1962. Sketch for Fruits of the Tropides Islands.

Watercolor and pencil on paper, 1976.
(Inv. No. 9677)