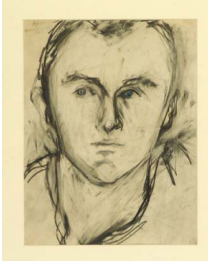


Larry Rivers

Works on Paper from the 1950s and 1960s

October 23 to November 27, 2021

1



LARRY RIVERS

The Young Frank O'Hara, 1958

pencil and colored pencil on paper

15 5/8 x 10 7/8 inches

(39.7 x 27.6 cm)

(Inv. No. 8932)

2



LARRY RIVERS

Untitled Nude, 1956

pencil on paper

16 1/2 x 13 3/4 inches

(41.9 x 34.9 cm)

(Inv. No. 9109)

3



LARRY RIVERS

Frank O'Hara, 1951

ink on paper

14 x 10 1/2 inches

(35.6 x 26.7 cm)

(Inv. No. 9104)

4



LARRY RIVERS

Portrait of John Porter, 1953

pencil on paper

16 1/2 x 13 3/4 inches

(41.9 x 34.9 cm)

(Inv. No. 9512)

5



LARRY RIVERS

Portrait of Martha Jackson, 1953

pencil on paper
14 x 16 1/2 inches
(35.6 x 41.9 cm)
(Inv. No. 9524)

6



LARRY RIVERS

Pierre Restany, 1958

graphite on paper
13 5/8 x 16 inches
(34.6 x 40.6 cm)
(Inv. No. 9249)

7



LARRY RIVERS

Joe Hazan, 1957

pencil on paper
14 x 16 3/4 inches
(35.6 x 42.5 cm)
(Inv. No. 9527)

8



LARRY RIVERS

Sonia, The Artist's Mother, 1954

pencil on paper
16 5/8 x 13 3/4 inches
(42.2 x 34.9 cm)
(Inv. No. 9526)

9

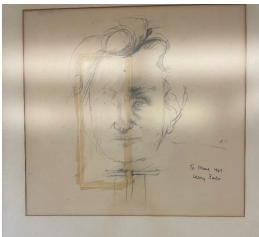


LARRY RIVERS

Untitled V Jack Kerouac, 1960

pencil on paper
14 x 11 inches
(35.6 x 27.9 cm)
(Inv. No. 003905)

10



LARRY RIVERS

Mama a Little Later, 1964

graphite on paper
18 x 18 inches
(45.7 x 45.7 cm)
(Inv. No. 9518)

11

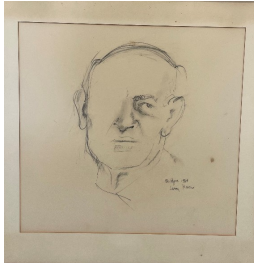


LARRY RIVERS

Fat Berdie Drawing, 1954

pencil on paper
16 3/4 x 13 7/8 inches
(42.5 x 35.2 cm)
(Inv. No. 9525)

12



LARRY RIVERS

Papa a Little Later, 1964

graphite on paper
18 x 18 inches
(45.7 x 45.7 cm)
(Inv. No. 9516)

13



LARRY RIVERS

Untitled (EAT), 1960

pencil on paper
14 x 13 3/4 inches
(35.6 x 34.9 cm)
(Inv. No. 9510)

14

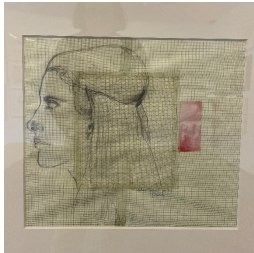


LARRY RIVERS

Berdie, 1953

pencil on paper
7 7/8 x 9 1/2 inches
(20 x 24.13 cm)
(Inv. No. 003907)

15



LARRY RIVERS

Advertisement for H.S. #3, 1966

pencil, enamel and collage
14 x 15 7/8 inches
(35.6 x 40.3 cm)
(Inv. No. 9531)

16

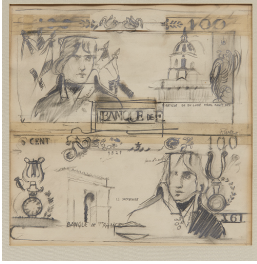


LARRY RIVERS

Untitled (Portrait of John Ashbery), 1962

pencil on paper
14 1/2 x 16 1/2 inches
(36.8 x 41.9 cm)
(Inv. No. 8646)

17



LARRY RIVERS

Double French Money, 1962-63

mixed media
12 x 12 inches
(30.5 x 30.5 cm)
(Inv. No. 9103)

18



LARRY RIVERS

Perspective Drawings, 1965

paper collage and mixed media on paper
mounted to panel
17 x 21 inches
(43.2 x 53.3 cm)
(Inv. No. 9532)

19



LARRY RIVERS

Gregory Corso as an Electric Fan, 1959

pencil on paper
14 x 17 inches
(35.6 x 43.2 cm)
(Inv. No. 9105)

20



LARRY RIVERS

French Postage Stamp, 1963

pencil on paper
14 x 13 3/4 inches
(35.6 x 34.9 cm)
(Inv. No. 9513)

21



LARRY RIVERS

Ten of Clubs, 1960

pencil on paper
10 x 8 1/4 inches
(25.4 x 21 cm)
(Inv. No. 9529)

22



LARRY RIVERS

Berdie Hands and Feet, 1953

pencil on paper
12 3/4 x 14 1/4 inches
(32.4 x 36.2 cm)
(Inv. No. 9523)

23



LARRY RIVERS

Flower Studies after Leonardo, 1954

pencil on paper
13 3/4 x 16 1/2 inches
(34.9 x 41.9 cm)
(Inv. No. 9533)

24



LARRY RIVERS

1959 Figure, 1959

pencil on paper
14 x 16 7/8 inches
(35.6 x 42.9 cm)
(Inv. No. 9528)

25



LARRY RIVERS

Seated Figure, c. 1960

pencil on paper
13 1/2 x 15 1/4 inches
(34.3 x 38.7 cm)
(Inv. No. 9511)

26



LARRY RIVERS

Cooper's Hawk and Clock, 1956

graphite on paper
14 x 16 1/4 inches
(35.56 x 41.49 cm)
(Inv. No. 003910)

27

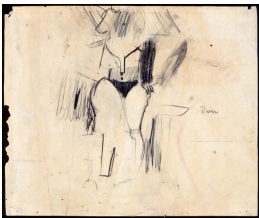


LARRY RIVERS

Reclining Maxine, 1958

pencil on paper
14 x 14 3/4 inches
(35.56 x 37.47 cm)
(Inv. No. 003909)

28

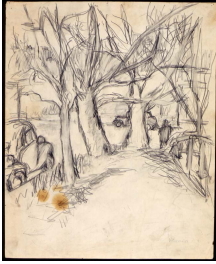


LARRY RIVERS

Maxine as de Kooning Female, 1958

pencil on paper
13 3/4 x 16 1/2 inches
(34.9 x 41.9 cm)
(Inv. No. 9111)

29



LARRY RIVERS

The Bronx Believe it or Not, 1951

pencil on paper

17 x 13 7/8 inches

(43.2 x 35.2 cm)

(Inv. No. 9522)

30



LARRY RIVERS

Stones #1-13, 1959

lithograph, series of 13

24 x 30 inches

(60.96 x 76.2 cm)

(Inv. No. 005444)