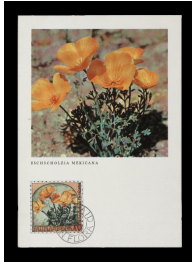


## Donald Evans

### Philatelic Counter

April 30 to June 4, 2022

1



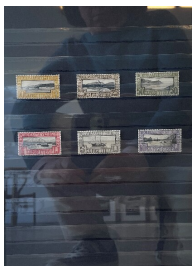
#### DONALD EVANS

*Fauna and Flora, 1945. Wildflowers (Yellow Poppy: Eschscholzia mexicana).*

Watercolor and rubber stamp on souvenir postcard, 1973.

(Inv. No. 9664)

2



#### DONALD EVANS

*Yteke, 1933. Fiftieth anniversary of the North Cape settlement.*

Watercolor and rubber stamp on paper, 1975.

(Inv. No. 9659)

3



#### DONALD EVANS

*Gnostis. 1957. Natural phenomena.*

watercolor on paper, 1972-73.

(Inv. No. 003937)

4



#### DONALD EVANS

*Amis and Amants, 1957. Native portraits and island landscapes.*

Watercolor and rubber stamp on souvenir postcard, 1976. 1977.

(Inv. No. 9666)

5



**DONALD EVANS**

*Adjudani. Veiled Adjudani woman.*

Watercolor on paper, from an unfinished series, 1977.

(Inv. No. 9674)

6



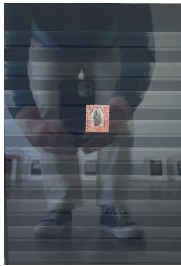
**DONALD EVANS**

*Adjudani, 1962. Veiled Adjudani woman.*

Watercolor on postcard, 1972.

(Inv. No. 9652)

7



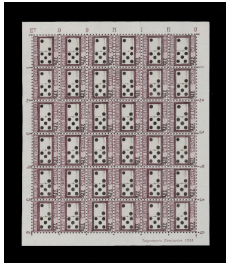
**DONALD EVANS**

*Adjudani. Veiled Adjudani woman.*

Watercolor on paper, from an unfinished series, 1977.

(Inv. No. 9673)

8



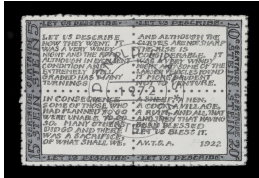
**DONALD EVANS**

*Domino, 1938. Dominoes.*

Watercolor on paper, 1975.

(Inv. No. 9655)

9



**DONALD EVANS**

*Stein, 1972. Fiftieth anniversary of "A Valentine to Sherwood Anderson" by Gertrude Stein.*

Watercolor and rubber stamp on paper, 1972.

(Inv. No. 9661)

10



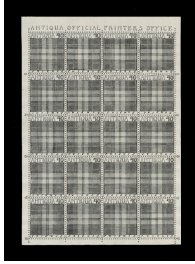
**DONALD EVANS**

*Stein, 1972. Gertrude Stein. "Tender Buttons" by Gertrude Stein.*

Watercolor and rubber stamp on paper, 1972.

(Inv. No. 9654)

11



**DONALD EVANS**

*Antiqua, 1954. Tartans (Gray Douglas).*

Watercolor on paper, 1973.

(Inv. No. 9662)

12



**DONALD EVANS**

*Adjudani, 1961. Carpets.*

Watercolor and rubber stamp on cover, 1975.

(Inv. No. 9653)

13



**DONALD EVANS**

*Nadorp, 1965. Mushrooms.*

Watercolor and rubber stamp on paper, 1972.

(Inv. No. 9651)

14



**DONALD EVANS**

*Nadorp, 1953. Windmills.*

Watercolor and rubberstamp on paper, 1977.

(Inv. No. 9660)

15



**DONALD EVANS**

*Sabot, 1966. Edible mushrooms.*

Watercolor and rubber stamp on paper, 1973.

(Inv. No. 9657)

16



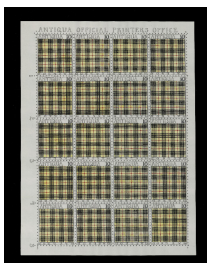
**DONALD EVANS**

*Selamat Makan, 1963. Mangoes.*

Watercolor, rubber stamp and collage on cover, 1977.

(Inv. No. 9668)

17



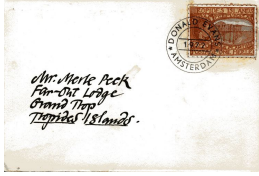
**DONALD EVANS**

*Antiqua, 1954. Tartans (MacLeod).*

Watercolor on paper, 1974.

(Inv. No. 9663)

18



**DONALD EVANS**

*Tropides Islands, 1936. Pictorial. Crepuscular pole planting.*

watercolor and rubber stamp on cover, 1971-71.

(Inv. No. 004639)

19



**DONALD EVANS**

*Tropides Islands, 1942. Fruits of the Tropides Islands.*

Watercolor on paper, 1975.

(Inv. No. 9656)

20



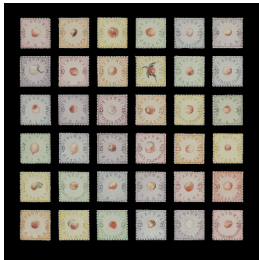
**DONALD EVANS**

*Sabot, 1918. Seapost.*

watercolor on paper, 1975.

(Inv. No. 004784)

21



**DONALD EVANS**

*My Bonnie, 1962-67. Peaches.*

Watercolor on paper, 1976.

(Inv. No. 9647)

22



**DONALD EVANS**

*1965. Airpost. Map of the Tropides Islands.*

*Inscribed with inter-island route of the*

*Tropides Air Service, 1977*

watercolor on paper

(Inv. No. 8996)

23



**DONALD EVANS**

*Tropides Islands, 1973. Death of Bob the cat mascot of the Tropides Islands.*

watercolor and rubber stamp on cover, 1973.

(Inv. No. 004641)

24



**DONALD EVANS**

*Sung Ting, 1880. 1884. 1893. Ting-Yao. Arms of Sun-Ting.*

Watercolor and rubber stamp on paper, 1976.  
(Inv. No. 9658)

25



**DONALD EVANS**

*Amis et Amants, 1956. Native portraits and island landscapes.*

watercolor and rubber stamp on paper, 1976.  
(Inv. No. 003934)

26



**DONALD EVANS**

*Nadorp, 1940. View of Adelshoeve.*

Watercolor and rubber stamp on souvenir postcard, 1977.  
(Inv. No. 9665)

27



**DONALD EVANS**

*Yteke, 1963. Landscapes.*

Watercolor on cover, unfinished, 1977.  
(Inv. No. 9649)

28



**DONALD EVANS**

*Tropides Islands, 1952-1962. Sketch for Fruits of the Tropides Islands.*

Watercolor and pencil on paper, 1976.  
(Inv. No. 9677)